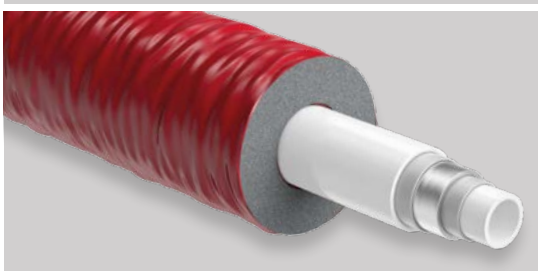
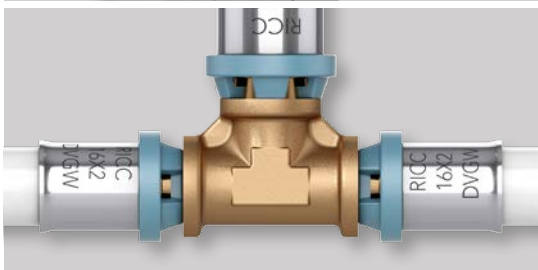
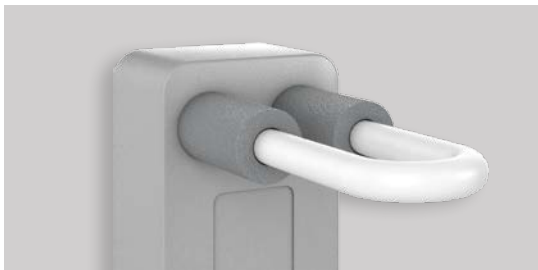


INSTALLATION SYSTEM



*CONNECT, DISTRIBUTE & USE –
WHEN HEATING COMES FULL CIRCLE*

EASYTEC - THE INNOVATIVE INSTALLATION SYSTEM

EASYTEC is the new installation system by VOGEL&NOOT. It offers a complete package solution from water distribution to indoor heating that is second to none. Benefit from our outstanding advantages. Simple installation combined with significantly reduced installation times.

► FACILITATED PROCUREMENT

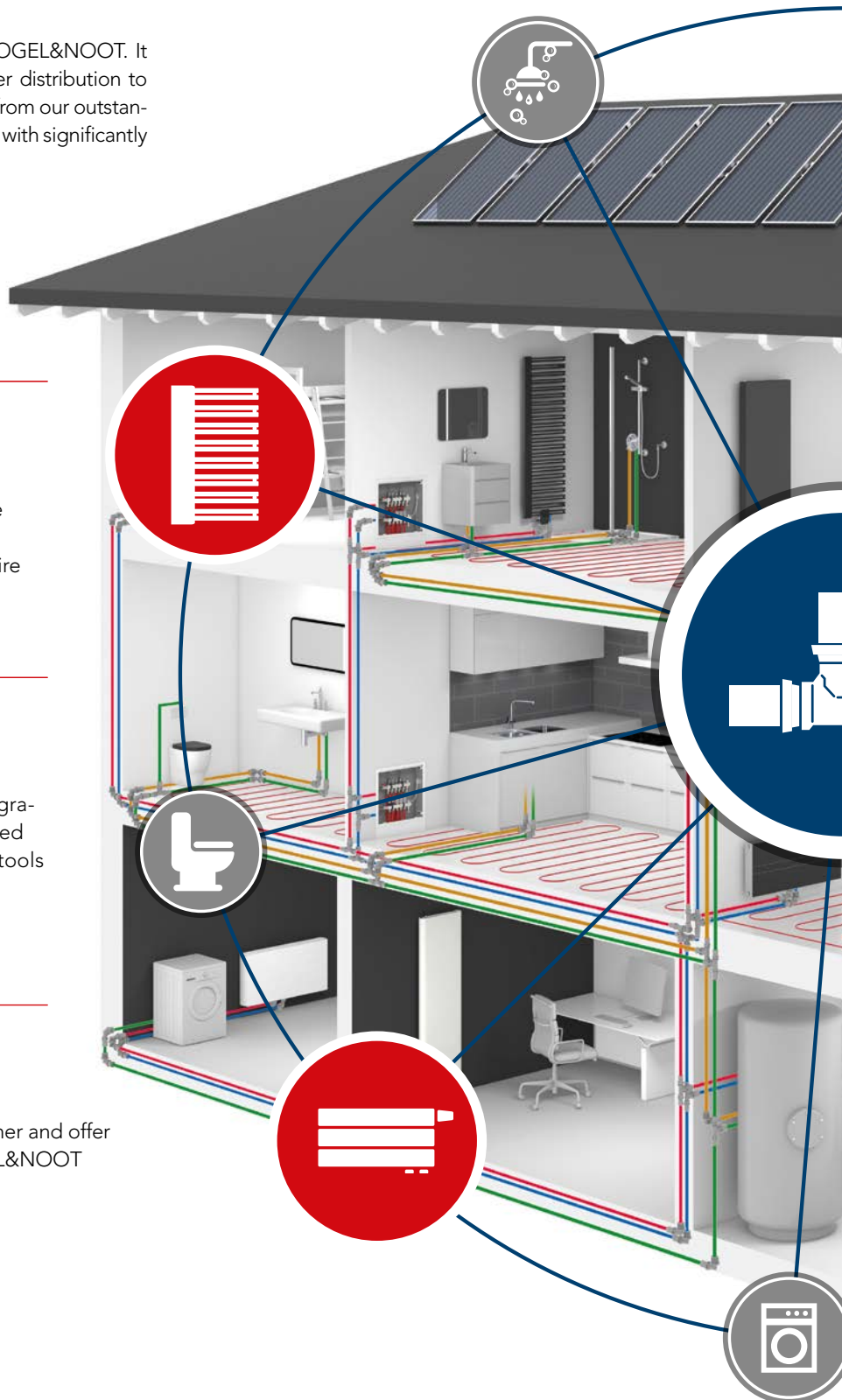
All products are available from our wholesale partners across the entire country. Your usual partners will support you throughout the entire ordering process.

► SIMPLE INSTALLATION

Universally applicable for radiators and integrated sanitary areas. Press fittings as "unpressed unsealed" models combined with the right tools ensure quick and secure connections.

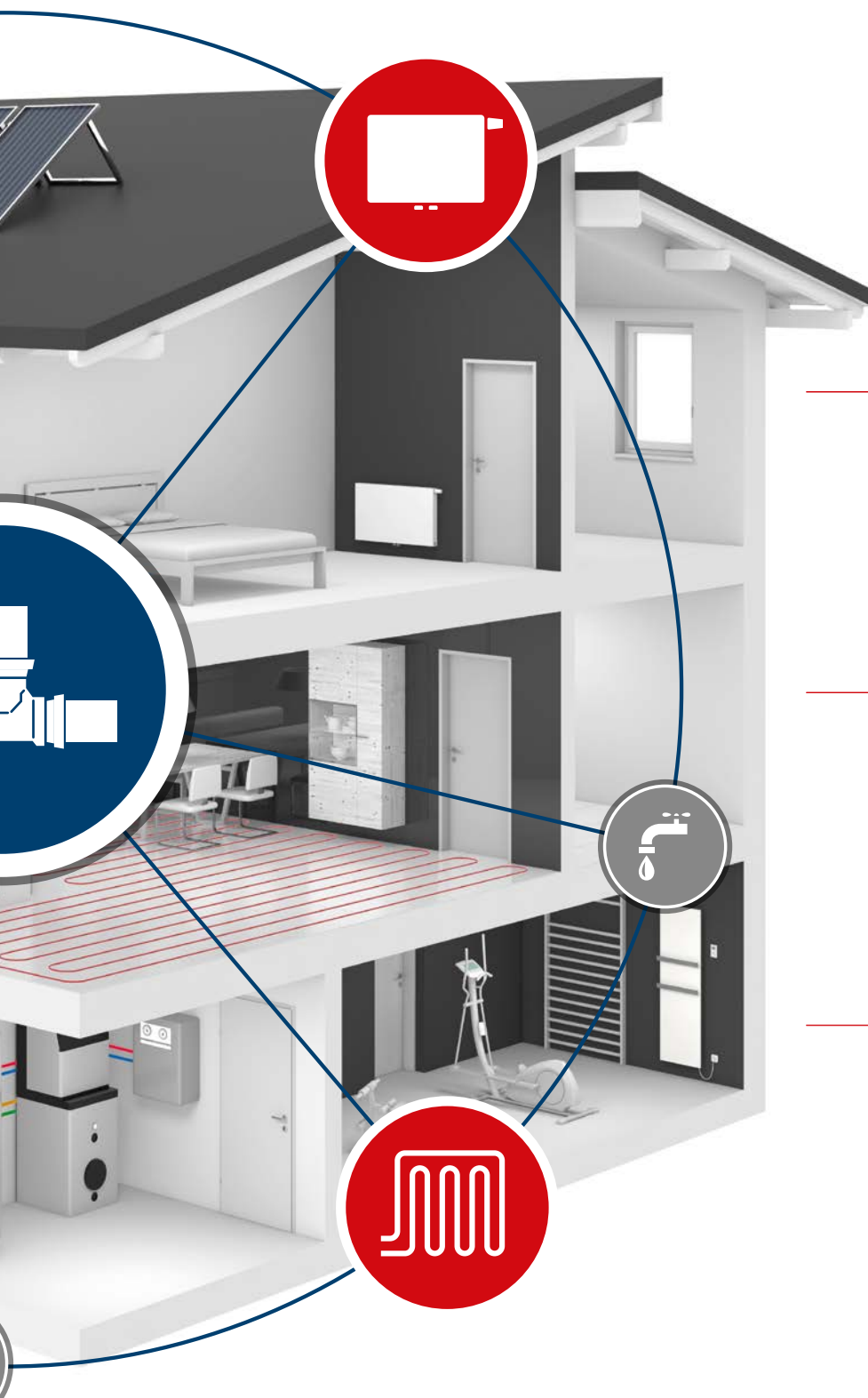
► SAVE WORKING TIME

All products are perfectly adapted to each other and offer convenient compatibility with all other VOGEL&NOOT components.





Reg.Nr.: W1.737



10-YEAR GUARANTEE ◀
for EASYTEC tubes and fittings.

PLANNING SUPPORT ◀
Technically highly skilled support.

OPTIMAL PRODUCT PORTFOLIO ◀
Varied product range from
water distribution to heating.



EASYTEC UNITES WHAT IS MEANT TO BE CONNECTED - QUICKLY, SAFELY AND CONVENIENTLY

INSTALLATION SYSTEM

The EASYTEC installation system is suitable for radiators as well as integrated sanitary areas. It consists of compound aluminium tubes and press fittings made of brass. The quality of the material meets the complete UBA list without any exception and is therefore hygienically impeccable and harmless in terms of health. The high degree of safety of the fittings is ensured by their characteristic of being "unpressed unsealed". It is therefore easily verified during pressure tests whether a fitting has not been pressed properly or whether it has not been pressed at all.

FACTS:

- Only full-range system provider from heat generation to heat distribution
- Pre-insulated tubes in WLG035 (same insulation effect, but thinner tubes)
- Pre-insulated 32-tube in rolls
- One contact person for fitters, from heat generation to heat distribution
- Facilitated procurement: All products are listed with our wholesale partners across the country
- Ideal for baseboard heating

INSTALLATION SYSTEM



Reg.Nr.: W1.737



TECHNICAL DATA OF EASYTEC COMPOUND TUBES				
Tube designation	16x2	20x2	26x3	32x3
External diameter, nominal measure in mm	16	20	26	32
Wall thickness, nominal measure in mm	2	2	3	3
Internal diameter, nominal measure in mm	12	16	20	26
Tube weight in g/m	105	148	240	323
Tube weight with water in g/m	218	337	554	854
Internal volume in l/m	0,113	0,189	0,314	0,531
Heat conductivity in w/m • K	0,4	0,4	0,4	0,4
Expansion coefficient in mm/m • K	0,025	0,025	0,025	0,025
Surface roughness [inside tube] in µm	1,5	1,5	1,5	1,5
Oxygen diffusion in mg/l • d	0	0	0	0
Operating temperature in °C *	70	70	70	70
Operating pressure in bar	10	10	10	10
Max. operating temperature [heating] in °C	95	95	95	95
Bending radius	5xD	5xD	5xD	5xD
All values are merely for reference purposes. Additional tube dimensions available on request.				

* Service life calculated at 10bar 70 °C and 50 years

FITTINGS

- Press fittings made of brass
- High level of rigidity
- At the same time, featuring good flexibility
- 2 x O-rings
- Inspection window for plug-in depth
- ÖVGW (Reg.Nr.: W1.737)/DVGW-tested
- "Unpressed unsealed"



Installation box valve radiator

TUBES

Pre-insulated tubes are available in the dimension of 16 - 26 mm with a WLG035 - insulation, which compared to conventional insulations means having the same insulation quality at reduced thickness levels. A 32 mm tube is available with WLG040 insulation.



- Plastic aluminium compound tube
- Dimension: 16, 20, 26, 32

- 1 Heat-stabilising PE
- 2 Bonding agent
- 3 Aluminium layer
- 4 Bonding agent
- 5 Heat-stabilising PE

- Larger tube dimensions available on request

EXTRACT FROM THE SYSTEM ELEMENTS



Tube coupling with external thread



Tube coupling with internal thread



Angle adaptor with external thread



T-piece for branching off tubes



Mini pressing tools



230V electric pressing tool



Calibration tool
(used with handle or
optionally with drill chuck)



THE RIGHT TOOLS FOR PERFECT INSTALLATION RESULTS

If you have the right tools, the optimal installation is easily achieved. The EASYTEC pressing tools stand out because of their first-rate handling and a very high level of robustness.

MINI PRESSING TOOLS - BATTERY-DRIVEN

With these tools the pressing process is merely a matter of seconds. The ergonomic mini pressing tool is extremely light-weight and works reliably due to its integrated micro-processor. The micro-processor monitors the pressing process and gives a warning signal in case the pressing force is too low due to empty batteries. The extremely powerful 2,5 Ah battery is clearly above the usual standards.

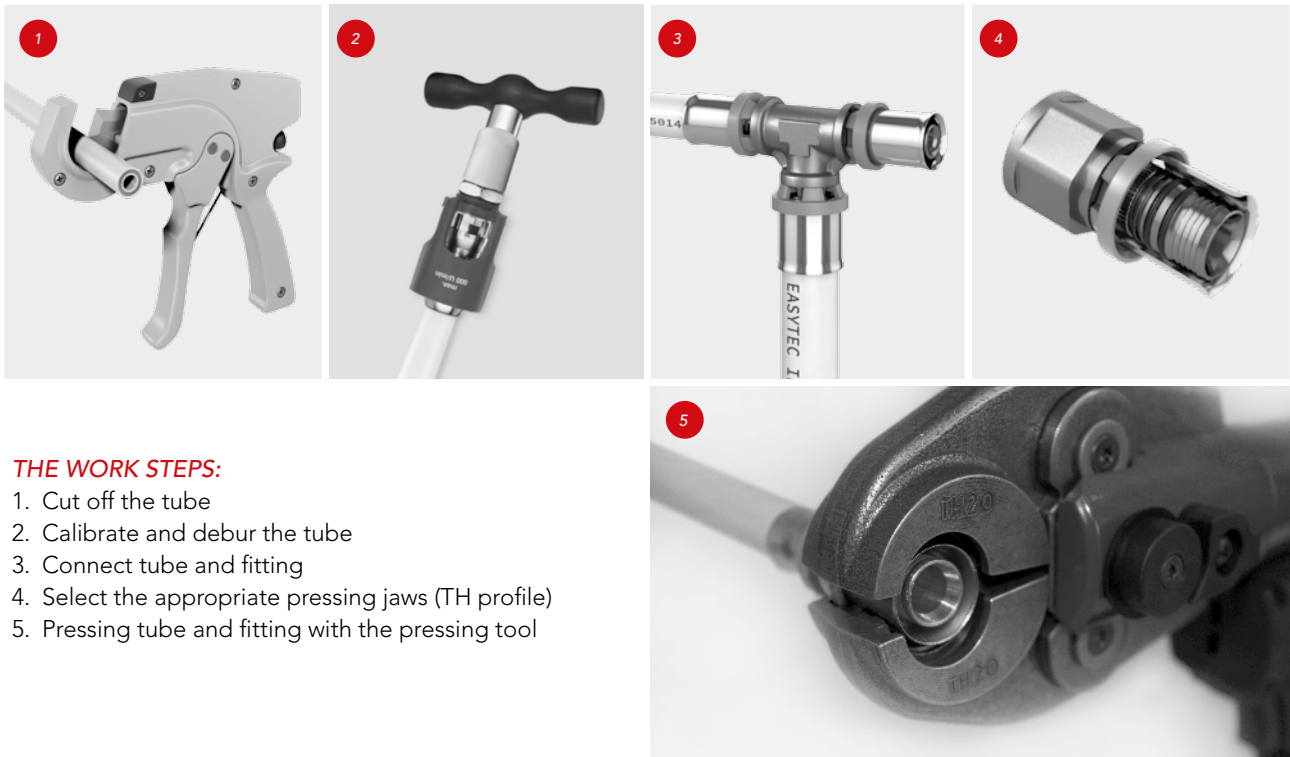
230V ELECTRIC PRESSING TOOLS

Suitable for connections from 16 to 63mm. Thanks to its compact, user-friendly structure and small size, it is the universal solution at every construction site.

TESTED QUALITY

The EASYTEC system fulfils all applicable norms and is tested according to ÖVGW/DVGW. Even the pressing tools are subject to strict quality controls and meet the highest requirements.

See for yourself and try the outstanding quality of EASYTEC.



THE WORK STEPS:

1. Cut off the tube
2. Calibrate and debur the tube
3. Connect tube and fitting
4. Select the appropriate pressing jaws (TH profile)
5. Pressing tube and fitting with the pressing tool

BENEFIT FROM OUR EXTENDED 10-YEAR GUARANTEE

We know about the great quality of our products. Therefore we offer you a 10-year guarantee on all EASYTEC tubes and fittings.*

If any defect should occur despite proper operation and correct installation of the system, VOGEL&NOOT will bear all expenses for the exchange of the defective system elements up to a total amount of 1,000,000 EUR.

This guarantee is issued in the form of a certificate with the data of the beneficiary, the contractor and the covered amount.

* The rules and regulations of the currently applicable Drinking Water Decree apply.



Rettig Austria GmbH Vogel und Noot Straße 4, 8661 St. Barbara, Austria
T: +43 3858 601-0, F: -1298, info@vogelundnoot.com, www.vogelundnoot.com